



Media Statement
For immediate release

TRAFFIC ANNOUNCEMENT
LANE CLOSURES AND TRAFFIC DIVERSIONS
ON JALAN LANGAT (BANTING-BOUND), KLANG
FROM 3 AUGUST 2020 UNTIL 16 AUGUST 2020

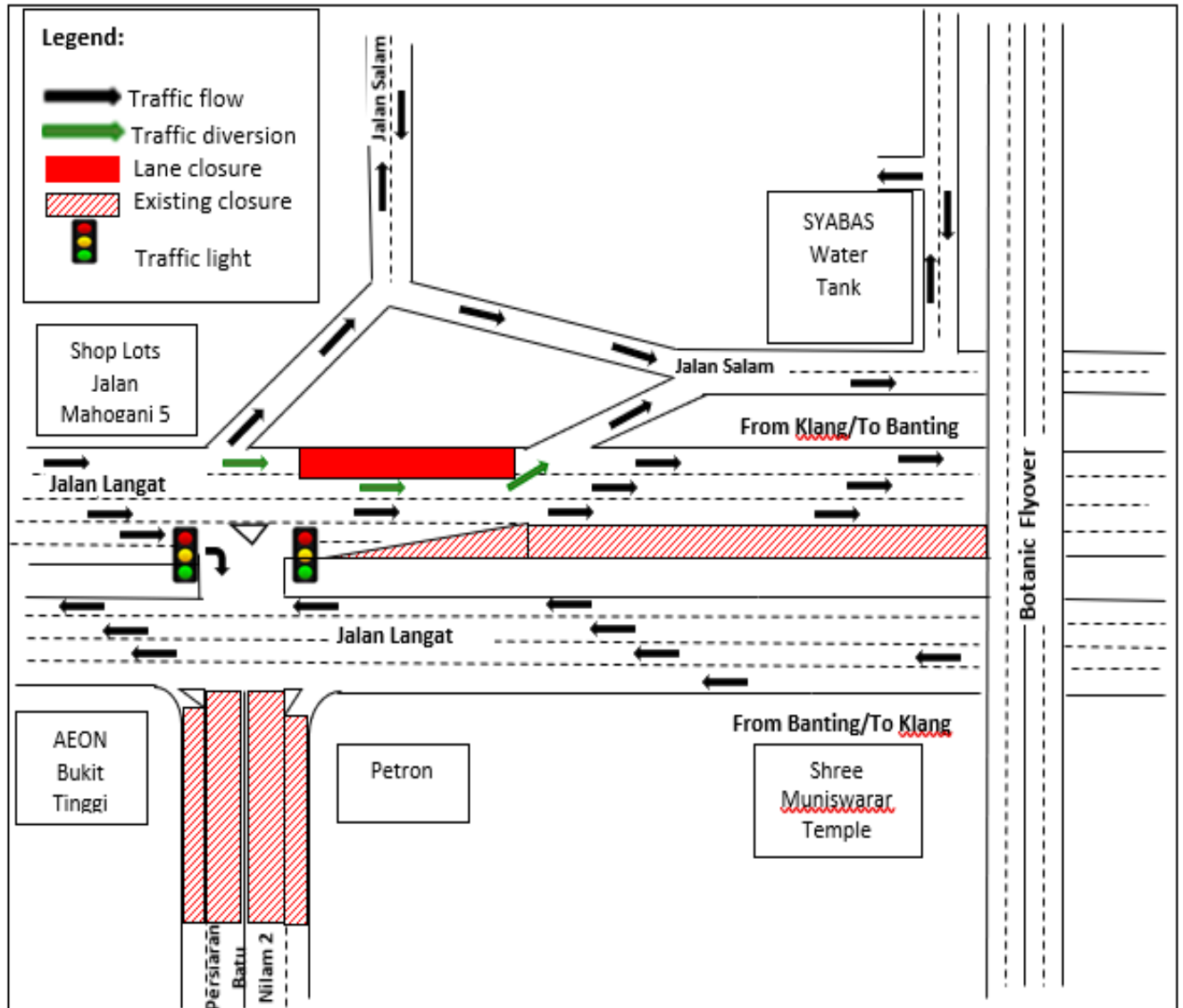
SHAH ALAM, SELANGOR – 30 JULY 2020: MRCB George Kent Sdn Bhd (MRCBGK), the contractor of the Light Rail Transit 3 (LRT3) project, wishes to inform that there will be lane closures and traffic diversions to facilitate utilities relocation works for the LRT3 project on Jalan Langat (Banting-bound), Klang from 3 August 2020 to 16 August 2020, (Monday to Sunday), 10:00 p.m. to 6:00 a.m.

The 20-metre lane will be closed in stages at the two locations below:

Closure A: The leftmost lane on Jalan Langat (Banting-bound before the Jalan Salam slip road), Klang

Date: 3 August 2020 to 9 August 2020

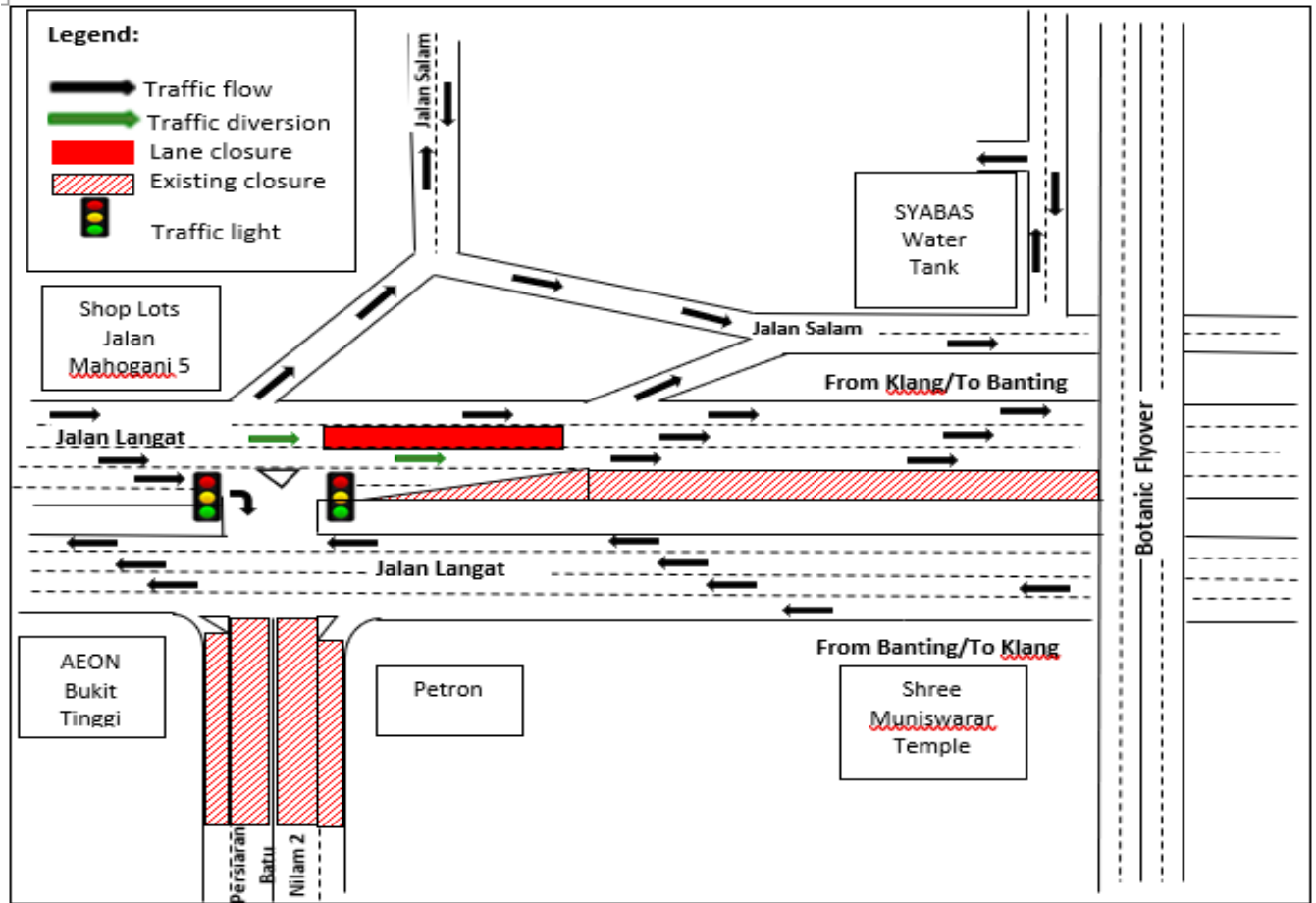
During the closure, motorists on Jalan Langat heading towards Banting will be diverted as indicated on the map below:



Closure B: The middle lane on Jalan Langat (Banting-bound, before the Jalan Salam slip road), Klang

Date: 10 August 2020 to 16 August 2020

During the closure, motorists on Jalan Langat heading towards Banting will be diverted as indicated on the map below:



We apologise for any inconvenience caused to the public and greatly appreciate your kind understanding and patience as we build LRT3 for the betterment of the future, and in improving Klang Valley’s public transport system.

For public enquiries, kindly contact the LRT3 hotline at 1 800 18 2585.

--END--



For media enquiries, please contact:

Lim Siew May
Media Manager, PR & Communications
MRCB George Kent Sdn Bhd
03-5033 6857
siewmay.lim@mrcbgk.com

ABOUT MRCB GEORGE KENT (MRCBGK)

MRCB George Kent Joint Venture (MRCB George Kent) was appointed on 4 September 2015 as the Project Delivery Partner (PDP) of Light Rail Transit 3 (LRT3).

On 17 October 2018, the PDP model was replaced with a fixed price contract regime, making MRCB George Kent the contractor.

MRCB is currently the largest developer cum contractor of Transit Oriented Developments (TODs) in Malaysia, while George Kent is the largest homegrown railway system specialist in Malaysia.

MRCB George Kent brings to the LRT3 project a highly-skilled and professional staff pool experienced in transit projects, with tailored and cost-effective solutions specific to Prasarana's needs in a collaborative and supportive manner.

ABOUT THE LIGHT RAIL TRANSIT LINE 3 (LRT3) PROJECT

The LRT3 project envisages to connect 2 million people between Bandar Utama and Klang by 2024. Developed in line with the Greater Kuala Lumpur/ Klang Valley (GKL/KV) Land Public Transport Masterplan, LRT3 will be a key feature in extending rail connectivity to the Western Corridor of GKL/KV. For more information, please visit www.lrt3.com.my and follow [@myLRT3](https://twitter.com/myLRT3).