



Media Statement

For immediate release

ROAD CLOSURE AT PERSIARAN KERJAYA TO FACILITATE LRT3 U-TROUGH SPAN TRIAL DELIVERY AND LAUNCHING

SHAH ALAM, SELANGOR – 10 November 2017: A section of Persiaran Kerjaya will be closed to traffic on 15 November 2017 from 10:00 pm until 5:00 am, 16 November 2017 to facilitate the LRT3 U-trough span trial delivery and launching session. To ensure the safety of the members of the public, the closure will start from the junction of **Jalan Usahawan** to the junction of **Jalan Doktor U1/67** and **Jalan Presiden U1/1 from 10:00 pm until 5:00 am.**

"The trial delivery is intended to allow MRCB George Kent Sdn Bhd and its contractors to study the impact of the delivery on the traffic flow, as well as the timing for the full delivery of the U-trough span. The study will facilitate the planning of works prior to the actual construction of the LRT3 project," said Ong Gin Lip, Project Director of MRCB George Kent Sdn Bhd, the Project Delivery Partner (PDP) of the LRT3 project.

Traffic personnel will be on-site to ensure traffic flow is monitored. Temporary traffic signage, flagmen and variable message signage will be in place to assist road users. All road users are advised to follow the traffic signage as safety precautions. Auxiliary Police will also be designated along the route to direct the traffic and ensure the safety of the members of road users.

"We apologise for any inconvenience caused to the public during this period and we thank you for your understanding as we complete the construction of the LRT3 project that will bring accessibility and connectivity to Klang Valley," Ong added.

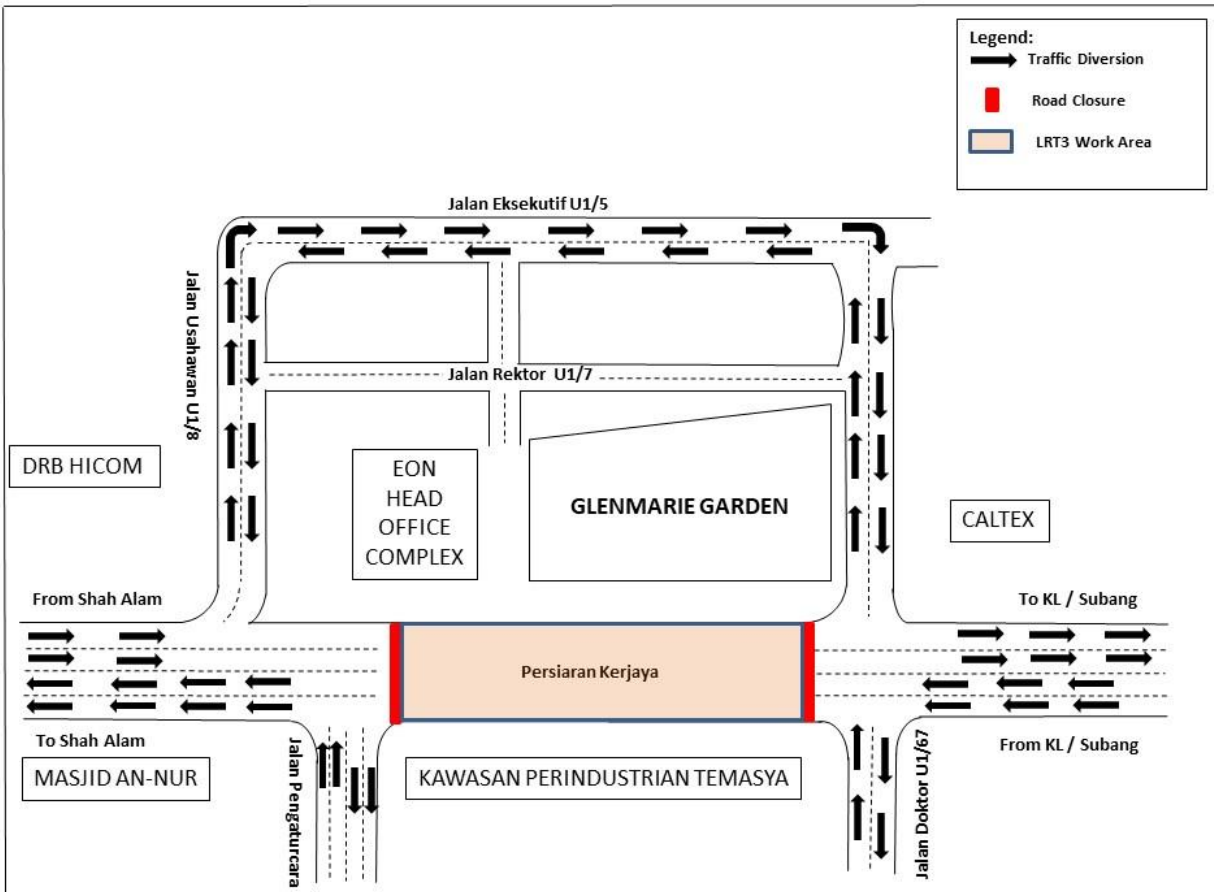


Image: U-trough span trial delivery road closure and diversions map.

The U-trough technology is internationally recognised as the latest, efficient and economical response to the needs of urban development. The “U-Trough” technology allows for components of the construction to be pre-cast in a centralised, controlled site and eventually assembled at the construction sites along the alignment.

For public enquiries contact LRT3 hotline at 1 800 18 2585.

--ENDS--

For media enquiries, contact:

Ivlynn Yap

PR & Communications

MRCB George Kent Sdn Bhd

03-5033 6857

Ivlynn.yap@mrcbgk.com

ABOUT MRCB GEORGE KENT (MRCB GK)

MRCB George Kent Joint Venture (MRCB George Kent) was appointed on 4th September 2015 as the Project Delivery Partner (PDP) of the Light Rail Transit 3 (LRT3).

MRCB is currently the largest developer cum contractor of Transit Oriented Developments (TODs) in Malaysia, while George Kent is the largest home-grown railway system specialist in Malaysia.

MRCB George Kent brings to the LRT3 project a highly-skilled and professional staff pool experienced in transit projects, with tailored and cost-effective solutions specific to Prasarana's needs in a collaborative and supportive manner.

ABOUT THE LIGHT RAIL TRANSIT LINE 3 (LRT3)

The LRT3 envisages to connect 2 million people between Bandar Utama and Klang by 2020. Developed in line with Greater Kuala Lumpur/ Klang Valley (GKL/KV) Land Public Transport Masterplan, LRT3 will be a key feature in extending rail connectivity to the Western Corridor of GKL/KV. For more information, visit www.lrt3.com.my and follow [@myLRT3](https://twitter.com/myLRT3)